

OREGON PUBLIC LAND CORNER REPORT / RESTORATION REPORT
Tillamook County Surveyor's Office

BOOK 8 234

SECTION: 29, 30, 31 & 32	TOWNSHIP: 1 South	RANGE: 9 West
COUNTY: Tillamook	DATE: 7/15/2025	
CORNER DESIGNATION: The Section Corner common to Sections 29, 30, 31, and 32 Township 1 South, Range 9 West, Willamette Meridian	(Please check one)	
	<input checked="" type="checkbox"/>	Condition Report Only
	<input type="checkbox"/>	Restoration
	<input type="checkbox"/>	Rewitness
	<input type="checkbox"/>	Unrecorded
	<input type="checkbox"/>	Reset at surface
<input type="checkbox"/>	Referenced Out	

Previous Rewitnesses, Restorations and Surveys, etc...
BLM-OREGON Field Note Volume: OR-R0053 Page: 309 (1857), Field Book "H" Pg. 21 (1884), F-40-144, Rewitness Card #250 (1971), P-826 (2006), Rewitness Bk. 7 Pg. 546 (2010)

History, condition, and sources:
In 1857 (GLO Filed Notes) a post for the corner was set from which four accessories were established. In 1884 (Field Bk. "H" Pg. 21) the corner was reset with a spruce limb. (F-40-144) A Fence post was set at location of spruce limb for the section corner, and the spruce limb was then set 2.0' West of the fence corner. In 1961 (Rewitness Card # 250) Stan Skinner set a 1.5" iron pipe for the corner and added two new accessories. In 1971 (Rewitness Card #250) the Tillamook County Surveyor's office set a 2" iron pipe with brass cap in concrete stamped "T1SR9W 30 29 31 32 RS 287 1971" in place of found 1.5" iron pipe set by Skinner and added three new accessories. In 2010 (Rewitness Bk. 7 Pg. 546) The Tillamook County Surveyor's office found the corner to be in good condition and added 120lbs of concrete around monument and established two new accessories. In 2025 the Tillamook County Surveyor's office found a 3" Tillamook County brass cap in concrete stamped as shown hereon. The found accessories are listed below.

Found: Power Pole #291100 N72°E 112.75' (Rewitness Card #250 Power Pole # 3800 N71°E 112.51'), (Rewitness Bk. 7 Pg. 546 Power Pole # 291100 at record position).

Found: Guy Pole #308107 N89°W 89.65' with scribed triangle and nail. (Rewitness Card #250 Guy Pole #B17L4 S84°W 88.78'), (Rewitness Bk. 7 Pg. 546 not found)

Found: Power Pole # 308106 N64°W 80.65' (Rewitness Card #250 Power Pole N72°W 88.70'), (Rewitness Bk. 7 Pg. 546 Power Pole #308107 at location.

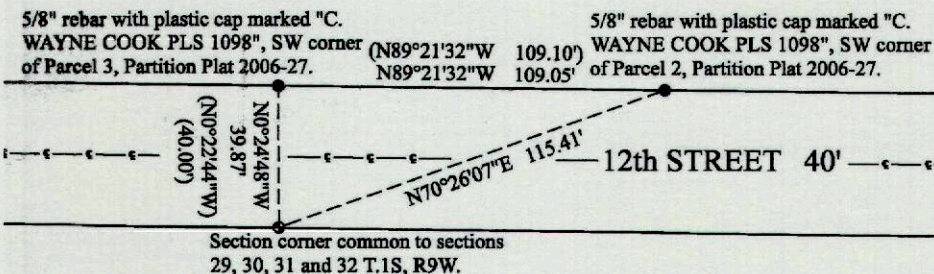
Found: 5/8" rebar with orange plastic cap stamped "C. Wayne Cook PLS 1098" N00°24'48" 39.87' at SW corner of Parcel 3 Partition Plat 2006-27 (Rewitness Bk. 7 Pg. 546 N00°22'42"W 40.00').

Found: 5/8" rebar with orange plastic cap stamped "C. Wayne Cook PLS 1098" SW corner of Parcel 2 Partition Plat 2006-27 inverse between Section corner and said Partition corner N70°26'07" 115.41' (Rewitness Bk. 7 Pg. 546 inverse between SW corner of Parcel 3, and the SW corner of Parcel 2 S89°21'32" 109.10').

Found: Hat section post with yellow metal location tag North 1.40' (Rewitness Card #250 North 1.40')

The monument was tied directly using GPS established control in Oregon North Zone NAD 83/91 grid coordinates in US Survey feet. Coordinates provided hereon are given in WGS 84 Latitude and Longitude.
Latitude: 45°26'55.31257"
Longitude: -123°49'25.77407"

() Indicates record value from Partition Plat P-826



Pictures of Found Monuments:



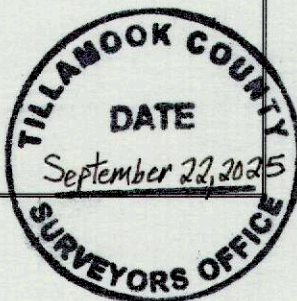
Location: Corner is located ±1200' East of the intersection of Evergreen and 12th Street on the South side of Right of way at fence corner

Tillamook County Surveyor office: 1510 3rd Street Suite C, Tillamook, OR. 97141

Party Chief: Travis Porter, Tillamook County Survey Technician III

Witnesses: Michael Rice P.L.S. 86926, Tillamook County Surveyor
Kael Poklikuha, Tillamook County Survey Technician II

Notes: Digital images taken of monument and accessories.



SURVEYOR'S SEAL

REGISTERED PROFESSIONAL LAND SURVEYOR
OREGON DECEMBER 11, 2012 MICHAEL R. RICE 86926
RENEWAL 12-31-2026

BOOK 8 234